



The new
Hyundai Santa Fe



NEW THINKING.
NEW POSSIBILITIES.

Refined in every detail. The new Santa Fe.

Close inspection of the new Santa Fe confirms an overall impression of refinement. It's evident in the finely sculptured contours that embrace the new hexagonal grille, Xenon headlamps*, LED running lights and eye-catching fog lamps. New alloy wheels add an extra touch of style and athleticism. Beneath the skin, an impressive portfolio of new safety, comfort and convenience technologies combine to provide a thoroughly rewarding driving experience.



*Xenon headlamps available on Premium Model



Image for illustrative purposes only

Confidence in every situation.

The looks of the new Santa Fe certainly inspire confidence. And that promise is fulfilled by intelligent active safety technologies that provide comprehensive protection for occupants and pedestrians alike. It's a vital component of Hyundai's philosophy of alleviating the concerns of everyday driving, and it's something the new Santa Fe does supremely well. Optimized Euro6 diesel engines are available with six-speed manual or automatic transmissions.



Flex Steer: Flex Steer enables drivers to choose among 3 driving modes (Normal/Sport/Comfort) according to their preference. A dedicated switch embedded in the steering wheel is easy to operate and can be switched while driving or when the vehicle is still.

High Beam Assist (HBA).* When vehicles are detected on the road ahead, the headlamps automatically switch from high beam to low beam, to avoid dazzling other drivers.

*HBA is available on the Premium model only.



Lane Departure Warning System*: First visual, then audible warning when leaving a traffic lane without signalling.

7 Airbag System: Lower pressure deployment airbags prevent secondary injuries that can occur during airbag activation. The airbag system consists of side and curtain airbags, in addition to a driver side knee airbag to minimise driver injuries.

*Available on the Premium model only.



The cabin of the new Santa Fe is a masterpiece of ergonomics, where high-quality materials are presented with a distinctly premium flair.

Disclaimer: Navigation System available on Premium model.
Leather available on Executive and Premium.



Comfort is a state of mind.

It starts with supportive, well-proportioned seats in a roomy, ergonomically optimized cabin. That's tangible comfort for all on board. But in the new Santa Fe, comfort also defines the way you feel. It's a sensation of wellbeing sustained by high-quality materials and premium features that will keep you relaxed, entertained and informed throughout even the longest journeys.



Panoramic sunroof. The extra-large panoramic sunroof adds the feel of open-air driving at the touch of a button. A discrete wind deflector automatically minimises wind noise and buffeting. Panoramic Sunroof available on Premium model.



Heated seats. Enjoy the welcoming warmth of heated front and rear seats. Available on Executive and Premium model.



Audio Visual Navigation System.* The high-quality navigation system combines a full-colour 8" TFT touch-screen with the broadcast clarity of DAB digital radio.

*Available on the Premium model only.



Infinity Premium Surround Audio. Twelve speakers, 630 Watts and the QuantumLogic Surround (QLS) system treat all occupants to a rich, multi-dimensional surround sound experience. Available on Premium model.

Disclaimer: Leather available on Executive and Premium models.



Helping you all the way.

The new Santa Fe offers a range of intelligent solutions that ease the challenges of everyday driving. Advanced technologies take all the guesswork out of parking in confined spaces. The Hyundai Santa Fe comes with generous load space – up to 1615 litres with the rear seats folded flat. Clearly, the new Santa Fe has room for everything except compromise.



Extra legroom. Passengers in the second row seats can enjoy even more legroom, by simply sliding the seats back, to increase the space.

Choice. The ultimate luxury.

The new Santa Fe is available in an attractive variety of exterior colours, tasteful interior colour combinations and stylish alloy wheels. Your local Hyundai dealer will be happy to help you with your choice, and advise you about the advantages and availability of Hyundai Genuine Accessories.

For more information on the new Santa Fe visit www.hyundai.ie



Sleek Silver



Titanium Silver



Phantom Black



Chalk Beige



Creamy White



Red Merlot



Tan Brown



Mineral Blue



Ocean View

Wheels



17" Alloy Wheels



18" Alloy Wheels*

*Available on the Premium model only.

Interior trims



Beige Leather two tone.*

*Available on Phantom Black and Ocean View exterior colours.



Black Leather one tone (Also available in cloth)**

** Leather only available on Executive and Premium.

Dimensions



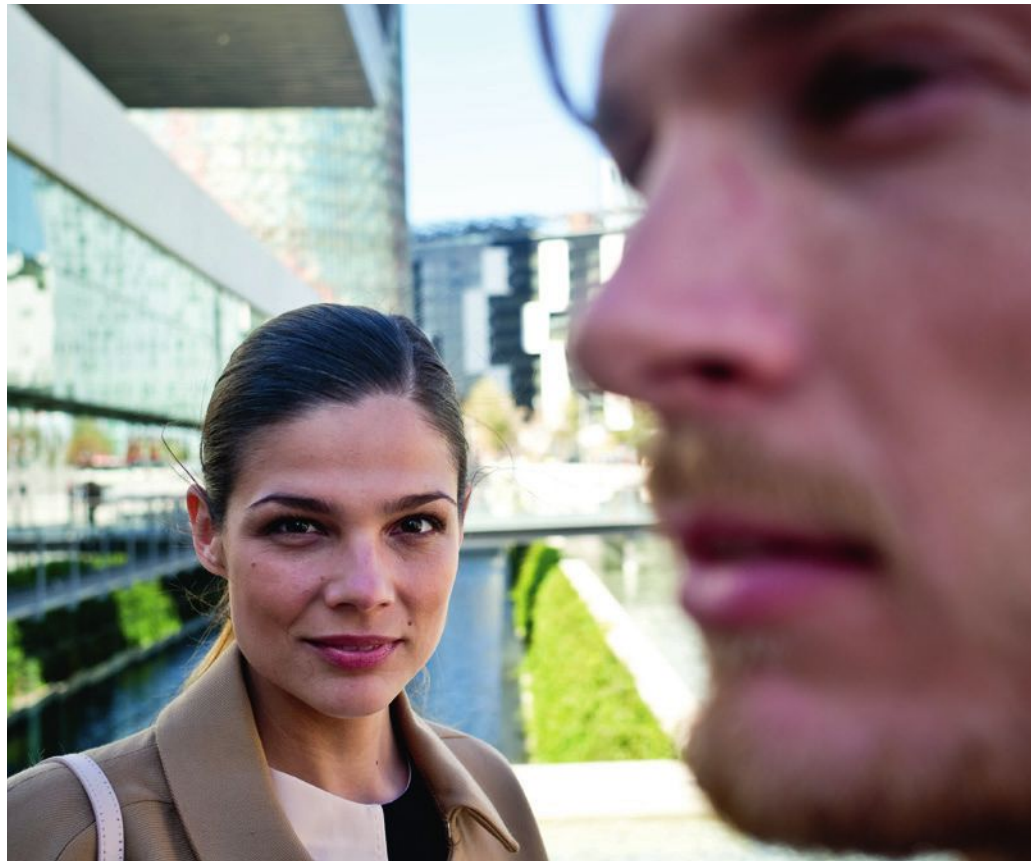
1690 mm (incl. roof rack)



2700 mm
4700 mm



1880 mm

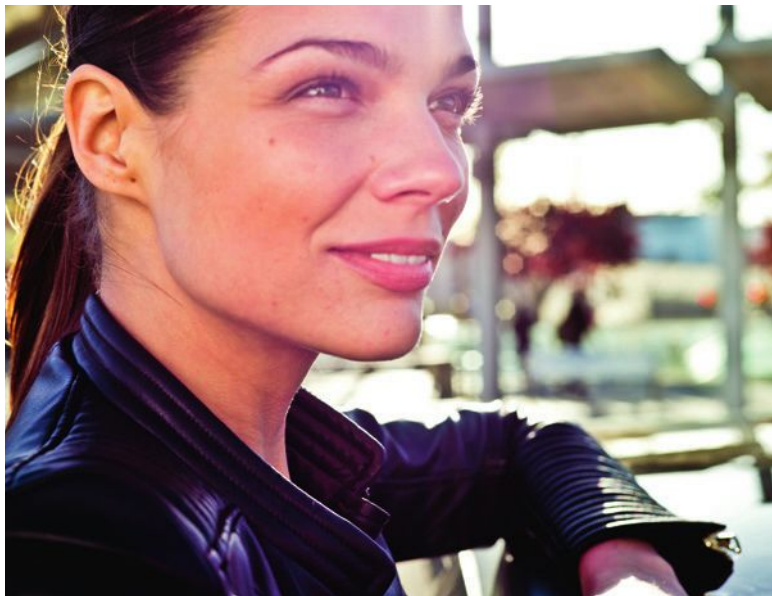


New Thinking. New Possibilities.

We, at Hyundai, are inspired by the passion to create cars that exceed your expectations. Dedicated to the way things should be, not the way they are. Looking for answers before the questions have been asked. We never stop searching for better solutions that help you get more out of life. It's just the way we are.

What does this mean for you? It means that the Hyundai you drive has been engineered to surprise you with its built-in quality. To compliment you with its striking design. To care for you, your family and passengers with its embracing strength. To minimize its impact on the environment. And to satisfy you with intuitive packaging that leaves nothing to be desired.

All of this being the product of new thinking that opens up a world of new possibilities.



SANTA FE COMFORT

The Santa Fe Comfort model comes with a host of generous features including:

- 17" Alloy Wheels
- Rear Reversing Camera
- Full Size Spare Alloy Wheel & Tyre
- Leather Steering Wheel & TM Knob
- Front, Side, Curtain and Knee Airbag
- Folding Key & Burglar Alarm
- Wiper De-Icer
- Radiator Grille (Body Colour/Chrome)
- Exterior Power Mirrors in Body Colour W/LED Indicator
- Exterior Mirrors with Heating Function
- Rear Spoiler with HMSL
- 4 Power Windows W/Auto Down & Safety Function
- Inner Chrome Coating Door Handles
- Cloth Seats
- Light & Rain Sensor
- LED DRL
- Bluetooth Hands Free
- Cruise Control
- Steering Remote Control
- Full Automatic Climate Control
- Flex Steer System
- Roof Rails
- Automatic Exterior Folding Mirrors
- Mud Guard
- Front and Rear Skid Plates

SANTA FE EXECUTIVE

The Santa Fe Executive model encompasses all the specifications of the Comfort and:

- Leather Seats
- Driver Power Seat
- Electric Parking Brake
- Solar and Privacy Glass
- Trailer Package
- Radiator Grille (Black/Chrome Coating)
- Exterior Chrome Door Handles
- Rear View Mirror: ECM & Compass
- Cloth A/B/C-Pillar Trim
- Front & Rear Seat Warmer
- Cornering Light
- LED Rear Combination Lamp
- Rear Automatic Climate Control
- Front + Rear Parking Assist
- Drive Mode Select (A/T only)



SANTA FE PREMIUM

The Santa Fe Premium model encompasses all the specifications of the Executive and:

- 18" Alloy Wheels
- Panoramic Sunroof
- Navigation System + DAB
- Heated Steering Wheel
- Xenon Headlamps
- TFT Supervision Cluster
- Lane Departure Warning System
- High Beam Assist
- Heated Steering Wheel

Specification may vary. Please contact your local Hyundai dealer for more information.



Specification

Engine			
Type		R2.2 EVGT	
Displacement (cc)		2,199	
Max. Power (ps / rpm)		200 / 3,800	
Max. Torque (Nm / rpm)	M/T	440 / 1,750 ~ 2,750	
	A/T	440 / 1,750 ~ 2,750	
Suspension			
Type	Front / Rear	Macpherson Strut Type / Multi Link Type	
Shock absorber	Front / Rear	Strut Type (Gas) / Shock Absorber Type (Gas)	
Brakes			
General		Dual-Diagonal, Split-Circuit, Power-assisted Braking system with EBD	
Front Brake Type		Φ320 Ventilated Disc, Floating-caliper brakes with Pads wear warning devices	
Rear Brake Type		Φ302(2WD/4WD) Solid Disc, Floating-caliper brake with wear warning device	
ABS		4-Wheel Electronic, 4-Sensor, 4-Channel Electronic brake distribution, Brake torque distribution system (EBD)	
Drive Train			
Type		Manual	Automatic
		R2.2 EVGT	R2.2 EVGT
Co2 level (g / km)	2WD	149	172
	4WD	149	174
Litre / 100 km	2WD	5.7	6.5
	4WD	5.7	6.6
Fuel Tank Capacity (litre)		64	
Transmission		6 Speed	
4WD drive system		ACTIVE ON-DEMAND 4WD	

The above values are results from internal testing and could be changed after validation.
Some of the equipment illustrated or described in this catalogue may not be supplied as standard equipment and may be available at an extra cost.
Hyundai Cars Ireland reserves the right to change specifications and equipment without prior notice.
The colour palets shown may vary slightly from the actual colours due to the limitations of the printing process.
Please consult your dealer for full information and availability on colours and trim.
Please consult your dealer or www.hyundai.ie for details on wheel energy efficiency rating.





All the information contained in this brochure is provisional and subject to change without notice and is intended only as preliminary notification. Possible variations in the representation of vehicle colours are due to the limitations of printing technology. The products shown correspond to the offer and the range of equipment for European markets. The vehicles shown in this brochure may be equipped with additional equipment at extra cost, and not all model versions are included in this brochure. Hyundai Motor Europe reserves the right to make changes to technical specifications and equipment content without notice. Please consult your Hyundai dealer for exact details.